

Homestead & Farm Notes

**JULY - AUGUST -
SEPTEMBER 2015**

<http://union.ifas.ufl.edu>

Dear Newsletter subscribers:

The Union County Extension Office has not updated the newsletter mailing list for quite some time now. It's that time folks! We will also implement a quarterly mailing of the newsletter instead of monthly starting with this issue. **Please fill out the enclosed form** and mail it back to the Extension Office, or e-mail ptoney@ufl.edu and please state whether it is to be mailed or e-mailed. **You will not receive a newsletter** if we do not receive an e-mail or a form from you. We encourage you to receive your newsletter via e-mail and your e-mail will be strictly confidential. E-mail or form **must be received by August 7th, 2015.**



UPCOMING PROGRAMS & EVENTS

Beekeepers Club Meetings at 7:00PM at the Union County Extension Office. July 14th, August 11th, and September 12th.

July 9th: North Florida Cattlemen's Association Quarterly Meeting at 5:30PM at Lakeside Community Center, Lake Butler. See enclosed flyer.

July 9th: Hay Field Day at Santa Fe River Ranch, Alachua from 9:00AM to 2:15PM, see enclosed flyer.

July 22nd: Cook Smart Eat Smart—Salads and Centerpieces at the Union County Extension Office from 11:00AM to 2:00PM.

July 27—29th: Farm to Fork Camp

July 27—31st: 4-H University

August 8th: Canning 101 All Pickled at the Union County Extension Office from 11:00AM to 2:00PM.

August 11th: Painting Day with Southern Chix

August 14th: Annual Union County 4-H Foundation Auction at 6:00PM at the Lakeside Community Center.

September 9th: Simple Steps to a Healthy Home—Green Clean at the Union County Extension Office from 11:00AM to 2:00PM.

INSIDE THIS ISSUE:

WILDLIFE WONDERS

LIVESTOCK CALENDAR

HORTICULTURE HINTS

4-H HAPPENINGS

HAY FIELD DAY

NFCA QUARTERLY MEETING

MOSQUITO'S

NEWSLETTER RENEWAL FORM

WILDLIFE WONDERS

July:

Alligators and crocodiles will begin to hatch.

Armadillos are breeding.

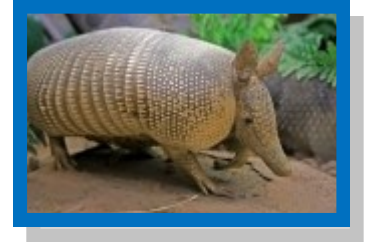
Squirrels are being born.

Look for frigate birds flying overhead in South Florida.

Shorebirds are nesting on beaches.

Listen for Eastern narrow mouth toads after heavy rains.

[Click here to read about the Nine-banded Armadillo](#)



August:

Black bear cubs are weaning from their mothers.

Purple Martins and Tree Swallows begin gathering to migrate south for winter.

Yellow Warblers migration begins.

Gopher Tortoise and turtle eggs are hatching.

Indigo snake and other snake eggs are hatching.

Young sea turtles are hatching.



Yellow Warbler

September:

Hawk migration begins at St. Joseph Peninsula in Gulf County.

Bald eagles return to nest sites and begin courtship.

Deer breeding begins in South Florida Flatwoods.

Blue crabs migrate from shallow panhandle coast to deeper water for the winter.



[Click here for more information on the Blue Land Crab](#)

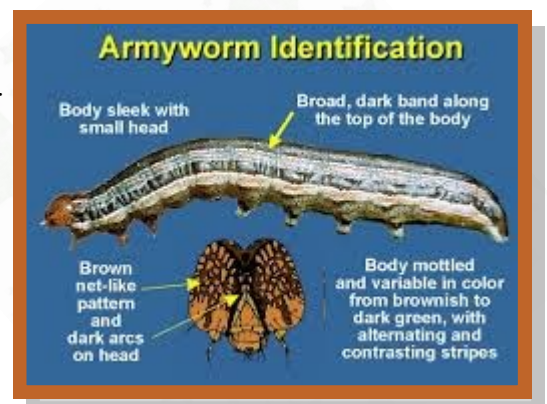
LIVESTOCK CALENDAR

JULY

- Mow or use herbicides to control pasture/hay weeds. Get rid of poisonous weeds that might be grazed if cattle are short of feed.
- Along fence lines: Black Cherry limbs that fall, China Berry limbs with fruit and yellow Jasmine vines.
- In Pastures: Black Nightshade, Jimson weed, Husk Tomato, Coffee weed, Sickle pod, Crotalaria, Lantana, Cocklebur, Poke weed, Sesbania, Bladder pod, and Rattlebox.
- If you need more grass, apply about 60 to 80 pounds actual nitrogen per acre.
- Keep mineral feeders full.
- Check hayfields for Armyworms, treat when you find an average of more than two worms, $\frac{3}{4}$ inches or longer per square feet. Scout every two days during wet rainy weather.
- Wean calves, revaccinate calves for Blackleg.

AUGUST

- Now is the time to lime fields that you plan to have winter pastures on such as rye. It takes at least 60 days for lime to neutralize soil acidity. If your rye fields need liming and you plan to plant November 1st, you need to lime now.
- Keep mineral feeders full. Grass quality will be dropping. Rumen microbes utilize minerals as they break roughage and low quality forages down into digestible microbial products. Your herd will just do better with adequate mineral supplementation as we go into fall.
- Look for fall Armyworms and Striped Grass Loopers this month and treat Bermudagrass hayfields into September if we have warm temperatures and moisture.
- If Bahiagrass pastures have a severe mole cricket problem, take a soil sample (to check pH) as well as treat with labeled bait (just before sundown after a rain, so mole crickets will come up at night and eat the treated bait). Low pH Bahiagrass fields have been associated with severe mole cricket problems and dieback, according to work by Dr. Martin Adjei in South Florida.
- Fields with bad Spittlebug infestations should be identified and a note put on your calendar to plan on burning that field in February, to control Spittlebug outbreak next year.



LIVESTOCK CALENDAR

SEPTEMBER

- Keep those mineral feeders filled. Pasture grass protein as well as digestibility is dropping at this time. Pregnant cattle need those nutrients to stay in condition during the last trimester of pregnancy.
- Keep scouting hayfields and pastures for Armyworms. Striped Grass Loopers, Mole Crickets, and Bermuda grass Stem Maggots.
- If you buy replacement stock, be sure they are healthy, calf hold vaccinated for brucellosis, and void their rumen of weed seed in an isolated pen for a week (if they come from South Florida where Tropic Soda Apple is a pandemic).
- Replacement heifers, if weaned, should be vaccinated, if purchased make sure they've had calf hood vaccination for brucellosis.
- Now is a good time to deworm the cow herd.
- Review winter feed supply and feeding plans so you can take advantage of lower price and volume discounts.

HORTICULTURE HINTS

JULY

Vegetable Garden Pointers:

Now is a good time to pull out the spring garden and till the soil, letting it rest until fall. If you need lime, now is the time to apply for fall gardening.

Heat tolerant Vegetables to plant this month include:

Eggplant, Okra, New Zealand Spinach, Sweet Potatoes (from vine cuttings, not tuber slips), Lima Beans, and Southern Peas.

Bulbs to plant this month: Aztec Lily, Butterfly Lily, Gladiolas, Spider Lily, and Walking Iris.

Annual Flowers to sow: Celosia, coleus, crossandra, exacum, hollyhock, impatiens, kalanchoe, nicotiana, ornamental pepper, portulaca, salvia, torenia, periwinkles, and zinnia.

HORTICULTURE HINTS

AUGUST

If you've had nematode problems in your okra, tomatoes, squash, eggplant, etc...now is the time to rotate out of your old garden and till up some new soil for your fall garden. If you still want a garden in your old spot, now is the time to use the heat of the sun to sterilize your old garden site for the next six weeks. First, till the soil up really well, apply lime if your soil test recommends it before tilling.

Heat tolerant vegetables to plant: Bush beans, pole beans, lima beans, cucumbers, sweet corn, southern peas, peppers, pumpkins, summer squash, winter squash, tomatoes, watermelons (marginal success).

Cool season vegetables to plant: Broccoli seed, cauliflower seed, collard seed, bunching onion seed or sets, multiplier onion sets, turnip seed.

ANNUALS & BULBS

[CLICK HERE FOR A FREE GUIDE TO GARDENING WITH ANNUALS IN FLORIDA](#)

As you replace spent plants in the flowering beds and landscape, think about planting coleus, salvia, or garden mums.

You still have a lot of bulb options: Aztec lily, butterfly lily, gladiolas, gloriosa lily, grape hyacinth, it is, kaffir lily, leopard lily, scarborough lily, sternbergia, spider lily and walking iris.

SEPTEMBER

Vegetables to plant: Cucumbers, squash, snap beans, pole beans should all be planted by September 15th. Other vegetables to plant include beets, broccoli, cabbage, carrots, lettuce, mustard greens, onions, radish, turnips and strawberries.

Tubers to plant: Amaryllis, Aztec lily, calla, crinum lily, iris, kaffir lily, narcissus, shell ginger, spider lily and rain lily.



[Click here to learn more about the Iris](#)

4-H Happenings



July Birthday's: Amanda Bertine, James Tallman, Katie Tomlinson, Jordan Cazee, Ashli Boatwright, Eli Rimes, Breanna Melton, Cameron Christie, and Lily Neal.

August Birthday's: Kendal Jeffers, Sierra Graham, Sklyer Shatto, Erica Roseke, Terryn Wilkins, William McManus, Liberty Nice, Layla Robinson, Addison Wright, and Kierston Clemons. (Will list September with 2015-2016 enrollments).

Attention Swine Exhibitors: You should have already received a letter in the mail from Mrs. Penny requesting your add on thank you letters. These must be delivered to either Mrs. Penny or the extension office before you can pick up your check. Please make sure the envelope is addressed properly and ready to be mailed.

4-H Auction News: The annual Union County 4-H Foundation auction and dinner will be held on Friday, August 14, 2015. Mark your calendars and invite your friends and family members to join us in raising funds for our youth programs!

4-H Summer Activities: July is full of summer activities! Check the 4-H calendar and be sure to sign up early as space is limited!

Follow us on Facebook! **Union County FL 4-H** is our group page! You will find lots of valuable information, photos of our summer activities and announcements on upcoming events!

July 2015

Sun	Mon	Tue	Wed	Thu	Fri	Sat
			1	2	3	4
					UCEO closed	
5	6 Canoeing	7	8	9	10	11
12	13	14	15	16	17	18
	Farm to Family Series	⇒	⇒	⇒	Last day of Series	
19	20	21	22	23	24	25
26	27 Farm to Fork Camp 4-H University	28	29 Last day of Series	30	31	
		⇒	⇒	⇒	Last day of 4-H University	

August 2015



Sun	Mon	Tue	Wed	Thu	Fri	Sat
						1
2	3	4	5	6	7	8
9	10	11 Painting Day	12	13	14 4-H Auction	15
16	17	18	19	20	21	22
23	24	25	26	27	28	29
30	31					

September 2015 4-H Enrollment Month

Sun	Mon	Tue	Wed	Thu	Fri	Sat
		1	2	3	4	5
6	7 UCEO closed	8	9	10	11	12
13	14	15	16	17	18	19
20	21	22	23	24	25	26
27	28	29	30			

UF/IFAS EXTENSION

HAY FIELD DAY

JULY 9, 2015 ☞ 9 a.m. to 2:15 p.m.

SANTA FE RIVER RANCH

29220 NW 122 STREET

ALACHUA, FL 32615



The Northeast Florida Livestock Agents Group will be hosting its 17th Annual Hay Field Day. There will be dealers present to demonstrate their latest equipment. The two keynote speakers will include Dr. Matt Hersom, Extension Beef Specialist & Dr. Jason Ferrell, Extension Weed Specialist.

TOPICS INCLUDE:

- Heifer Performance on Tifton-85 vs. Coastal
- Chute side handling
- Hayfield insecticides
- Weed identification
- Equipment demonstrations
- Pasture herbicide update

REGISTRATION:

\$10.00 in advanced, \$15.00 day of event (lunch will be served by Farm Credit)

Registration begins at 8:30 a.m., Programs/Exhibits at 9:00 a.m. & Equipment Demonstrations at 11:00 a.m.

Register at Eventbrite: <http://tinyurl.com/p3x6dng>

PESTICIDE & CERTIFIED CROP ADVISORS
CEUS AVAILABLE

UF IFAS Extension
UNIVERSITY OF FLORIDA

For more information, contact Barton Wilder at
352.955.2402 or email bwilder@ufl.edu.

An Equal Opportunity Institution. Extension Service, University of Florida, Institute of Food and Agricultural Sciences, Nick T. Place, Dean. Single copies of Extension publications (excluding 4-H and youth publications) are available free to Florida residents from county Extension offices. Information about alternate formats is available from IFAS Communications, University of Florida, PO Box 110880, Gainesville, FL 32611-0810.



North Florida Cattlemen's Association Quarterly Meeting

THURSDAY, JULY 9 ~ 5:30PM

Lake Butler Community Center

FREE Program & Dinner

Please Register

5:30pm

Social

6:00pm

Program:

"Heat Stress In Cattle"

Dr. Matt Hersom

Extension Beef Cattle Specialist

7:00pm

Steak Dinner

REGISTER by July 7th:

Phone: (386)752-5384 **Email:** columbia@ifas.ufl.edu
Online: <http://columbiacountyextension.eventbrite.com>

UF | **IFAS Extension**
UNIVERSITY of FLORIDA

Lake Butler Community Center

155 NW 3rd Street | Lake Butler, FL 32054

PRECAUTIONARY MEASURES TO PREVENT MOSQUITO-BORNE ILLNESSES

With the notification from the Bradford Union Department of Health that a horse has tested positive and died from Eastern Equine Encephalitis (EEE) in Bradford County, Bradford County Emergency Management recommends the public be attentive in protecting themselves from exposure of mosquito bites which can cause the encephalitis disease. Horse owners are strongly encouraged to vaccinate their horses as well.

Symptoms develop four to 10 days after infection. In horses, they include unsteadiness, erratic behavior, and a marked loss of coordination. There is no effective treatment, and seizures resulting in death usually occur within 48 to 72 hours. Most people that are infected with the virus have no symptoms; others get only a mild flulike illness with fever, headache, and sore throat. When serious infection of the central nervous system occurs, a sudden fever and severe headache can be followed quickly by seizures and coma, which often result in death or permanent brain damage. A vaccine is available for horses, but not for humans.

The Bradford County Mosquito Control is actively spraying adult mosquito populations to protect the public from nuisance mosquitoes and mosquito borne diseases. The county is also checking with the Florida Division of Agriculture and the Federal Emergency Management to see if aerial spraying or other control measures are appropriate.

Additionally, we encourage everyone to take basic precautions to help limit exposure by following these recommendations:

PRACTICE THE "5 D'S":

DUSK - Avoid outdoor activity when mosquitoes are most actively feeding and flying.

DAWN - Avoid the outdoors during dawn when the presence of sunlight is weak.

DRESS - Wear clothing that covers most of your skin when outdoors.

DEET - Repellents containing Deet are highly recommended. Picaridin, oil of lemon eucalyptus and IR3535 are other repellent options. Always read label directions carefully for the approved usage before you apply a repellent. Some repellents are not suitable for children.

DRAINAGE - check around your home to rid the areas of standing water, where mosquitoes lay eggs.

ELIMINATE MOSQUITO BREEDING SITES:

- Clean out eaves, troughs and gutters
- Remove old tires or drill holes in those used in playgrounds to drain.
- Turn over or remove empty plastic pots.
- Pickup all beverage containers and cups
- Check traps on boats or other equipment that may collect water.
- Pump out bilges on boats.
- Replace water in birdbaths and pet dishes at least once a week.
- Change water in plant trays, including hanging plants, at least once a week.
- Remove vegetation or obstructions in drainage ditches that prevent the flow of water.

Interested in "Fighting the Bite"? Perhaps you should consider joining the Buzz Busters. Buzz Busters are volunteers who help the Bradford County Mosquito Control by monitoring mosquito populations in the county. The Buzz Busters use a pest control strategy called Integrated Pest Management (IPM). Using IPM means gathering information about a pest problem and using that information to select the best possible control strategy. The Buzz Busters are supported by many agencies, including the Bradford Board of County Commissioners, Bradford County Mosquito Control, Bradford Soil and Water Conservation District, University of Florida Integrated Pest Management, University of Florida Medical Entomology Laboratory and the Bradford County Extension Service. Call the University of Florida Bradford County Extension Service at 904-966-6299 if you are interested in becoming a Buzz Buster volunteer.

If you would like more information on EEE and its prevention, please contact Ed Rensberger at the Bradford and Union County Health Department at (904) 964-7732 ext. 1300.

Please fill out the form below and mail to the Union County Extension Office at 25 NE 1st Street Lake Butler, FL 32054 to continue receiving your newsletter, if we do not receive this slip you will no longer be on our mailing list. You may also click [here](#) to send an e-mail to ptoney@ufl.edu

PLEASE PRINT LEGIBLY and FILL OUT ONLY ONE — TO RECEIVE BY MAIL OR E-MAIL

PLEASE STATE YOUR NAME WITH BOTH OPTIONS

NAME: _____

ADDRESS: _____

CITY: _____

STATE: _____ **ZIP CODE:** _____

We would like to encourage you to receive your newsletter via e-mail. Your e-mail will be kept confidential at all times.

Union County Extension Office

25 NE 1st Street

Lake Butler, FL 32054

Non-Profit Organization

US Postage Paid

Lake Butler, FL

Permit No. 19



Union County Extension Office

25 NE 1st Street, Lake Butler, FL 32054

Phone: (386) 496-2321 Fax: (386) 496-1111

Email: union@ifas.ufl.edu **Hours:** 8:00AM - 4:30PM Monday-Friday

<i>Chris DeCubellis/Tim Wilson</i>	<i>Samara Deary</i>	<i>Terricina Knittles</i>	<i>Kristi McCallister</i>	<i>Pamela Toney</i>
<i>Interim Agent's</i>	<i>FCS Agent I</i>	<i>FNP Assistant</i>	<i>4-H Program Assistant</i>	<i>Secretary</i>

The Institute of Food and Agricultural Sciences (IFAS) is an Equal Employment Opportunity – Affirmative Action Employer authorized to provide research, educational information and other services only to individuals and institutions that function with non-discrimination with respect to race, creed, color, religion, age, disability, sex, sexual orientation, marital status, national origin, political opinions or affiliations. U.S. Department of Agriculture, Cooperative Extension Service, University of Florida IFAS, Florida A&M University Cooperative Extension Program, and Boards of County Commissioners Cooperating.